

B+BTEC

Karat[®] 350

USE WET OR DRY, BY HAND OR WITH DRILLROBOT

+ MORE POWER! + LARGER DRILLING RANGE!
+ SMARTER ELECTRONICS! + MORE OPTIONS!



Easy Horizontal
Set up with
Click-n-Drill Slide

New Karat® 350 core drilling rigs for ultra fast and precise wet and dry drilling in reinforced concrete, brick, masonry, etc.

Compact & lightweight. Designed for core drilling professionals.

Modular Design

The Modular Design of the new Karat® 350 core drilling machines gives the customer complete freedom to configure his own drilling rig. Also it allows for the easy exchange of drill motors, stands and accessories on the job-site.

Quality Engineering

The Karat® 350 was completely redesigned from the ground up and comes with over 20 quality features to improve drilling performance, machine life & operator comfort.

Features

- Versatile: use Wet or Dry, use with Torque Amplifier or Drill Robot
- Redesigned 3-Speed Gear Box
- Even more powerful 3200W motor
- Click-n-Drill Slide for Easy Machine Set Up
- Larger Drilling Range up to Ø350 mm
- Latest Generation RGB LED's
- Soft Start
- 360° Rotating Water Connection with Water Flow Indicator
- Data Retrieval Option
- Modular Design
- 1¼" Spindle

Latest Generation
True RGB LED's



Drill Stand with Precision Dovetail Guide-Way

Click-n-Drill Slide for Fast and Easy Machine Set-up

Mounting Option for Torque Amplifier or Drillrobot

Machine tiltable from 0° to 90° with Angle Indication

Mounting Option for Ceiling Jack Support or Vacuum Set Large

Powerful 3200W Motor in Professional Grade Aluminum Housing

Completely redesigned gearbox for Durability and Low Maintenance

Optional Dry Drilling Adapter turns Karat® 350 into a Dry Drilling Unit

Full Range of HiSpeed Core Bits for Wet or Dry use



Karat 350



- + USE WET OR DRY!
- + USE WITH TORQUE AMPLIFIER!
- + USE WITH DRILL ROBOT!



NEW!



What's in the Box?

Karat® 350 Drill Motor | Click-n-Drill Slide | Drill Stand Large with Wheels | GFCI Switch | 360° Rotating Water Connection with Waterflow Indicator | Anchoring Assembly | Tool Set | Operating Manual |

Karat® 350

Part Nr.: **2.000.357**

EAN: 8714345244563

Technical Specifications:

Bit Range	Maximum in Reinforced Concrete:	Ø25 - 350 mm
	Optimal in Reinforced Concrete:	Ø40 - 230 mm
Diamond Core Bits	HiSpeed Crown Bits HiSpeed Segmented Bits DrySpeed Dry Core Bits	
	Standard Bit Lengths:	300 - 400 mm
	Max. Bit Length on Drill Stand:	620 mm
Gear Selection	Speed 1 Wet/Dry:	Ø160-350 / 202-350 mm
	Speed 2 Wet/Dry:	Ø80-160 / 102-202 mm
	Speed 3 Wet/Dry:	Ø25-80 / 56-102 mm
Motor*	Power:	3.200 W
	Voltage:	230V
	Frequency:	50Hz
	Spindle Threading:	1 1/4"
	Gearing:	3-Speed
	No Load Speed	385 - 820 - 1200 rpm
Dimensions & Weight	Dimensions:	710 x 340 x 900 mm
	Total Weight:	31,9 kg
	Weight Motor + Slide:	17,9 kg
	Weight Drill Stand Large:	14 kg
Safety Features	RGB LED Motor Overload Indicator Pulse™ Electronic Motor Protection System Electronic Safety Clutch GFCI Switch Waterflow Indicator	

* Other Voltages and Frequencies available upon request.



Drill Motor Karat® 350 **NEW!**

- Powerful 3.200W Drill Motor
- Redesigned 3-Speed Gear Box
- RGB Led Overload Indication aids in maintaining optimal downfeed pressure for Optimal Drilling Performance
- Professional Grade Aluminum Motor Housing

Drill Motor Karat® 350

Part Nr.: **6.000.526**

EAN: 8714345212807



Drill Motor + Slide Karat® 350 **NEW!**

- Powerful 3.200W Drill Motor
- Redesigned 3-Speed Gear Box
- RGB Led Overload Indication aids in maintaining optimal downfeed pressure for Optimal Drilling Performance
- Professional Grade Aluminum Motor Housing
- Click-n-Drill Slide for fast and easy machine set up

Drill Motor + Slide Karat® 350

Part Nr.: **6.000.517**

EAN: 8714345212715



Click-n-Drill Slide Karat® 350 **NEW!**

For Karat® 350 Drill Motors. To be used on Drill Stand Large.

Click-n-Drill Slide Karat® 350

Part Nr.: **2.000.352**

EAN: 8714345244518



Torque Amplifier Karat® 350 **NEW!**

Reduces the amount of downfeed pressure needed. For Operator Comfort. Can be mounted left and right. Ratio 3:1

Torque Amplifier Karat® 350

Part Nr.: **2.000.354**

EAN: 8714345244532



Drill Stand Large Series **NEW!**

- Max. Bit Diameter: Ø350 mm
- Max. Drill Bit length: 620 mm
- Precision Dovetail Guide-Way
- Retractable Bore Hole Center Pointer
- Drilling Depth Indication
- Angle Drilling: 0 - 90° with indicator
- Dimensions: 540 x 335 x 900mm
- Weight: 14 kg
- Incl. Tools Set



Drill Stand Large

Part Nr.: **2.000.353**

EAN: 8714345244525

Drill Stand Large XL 1000 mm

Part Nr.: **2.000.347**

EAN: 8714345244709

Drill Stand Large XXL 1400 mm

Part Nr.: **2.000.346**

EAN: 8714345244716





Ceiling Jack ^{NEW!}

Telescoping Ceiling Jack
Length 1,85 - 3,41 mtr.
Weight: 5 kg

50%
LESS
WEIGHT

Ceiling Jack

Part Nr.: **2.100.150**
EAN: 8714345255781



Centerpen

For the fastening of the Karat® Drill Stands Compact and Large Series. Requires Drop-in anchor SD12.

Centerpen

Part Nr.: **2.100.009**
EAN: 8714345000848



Vacuum Pump VAC 800

- Pump protected by Carrying Frame
- Pump protected against entry of water
- Protective Stainless Steel Pump Cover
- Air Buffer prevents sudden loss of vacuum
- Requires Vacuum Kit Large.

Vacuum Pump VAC 800

Part Nr.: **2.100.068**
EAN: 8714345196176



Vacuum Kit Large ^{NEW!}

For the fastening of the Drill Stand Large (Part Nr. 2.000.353) using a vacuum pump. Incl. Vacuum Rubber for the drill stand Large Series

Vacuum Kit Large

Part Nr.: **2.000.342**
EAN: 8714345244754

+ SUPERIOR QUALITY
Unparalleled Drilling Speed

HiSpeed Crownbits 1/2"

Superior Quality HiSpeed Diamond Crown Bits. For Wet Use in High Strength and Heavily Reinforced Concrete.

Bit Range: Ø25 - Ø110 mm
 Diamond Height: 9 mm
 Threading: 1/2"



Part Nr.	Diameter	Length	EAN
2.562.530	25	300	8714345033853
2.562.630	26	300	8714345033877
2.562.830	28	300	8714345033907
2.563.030	30	300	8714345033921
2.563.230	32	300	8714345033945
2.563.530	35	300	8714345033983
2.563.830	38	300	8714345034010
2.564.030	40	300	8714345034027
2.564.230	42	300	8714345152066
2.564.330	43	300	8714345152073
2.564.530	45	300	8714345152080
2.565.030	50	300	8714345152097
2.565.430	54	300	8714345152103
2.566.030	60	300	8714345152110
2.566.840	68	400	8714345152127
2.567.030	70	300	8714345152134
2.568.030	80	300	8714345152141
2.569.030	90	300	8714345152158
2.561.003	100	300	8714345152165
2.561.043	104	300	8714345152172
2.561.103	110	300	8714345152189

Other Diameters, Lengths & Adapters available.
 See bbtectoools.com



Adapter 1/4" - 1/2"

Part Nr.: **6.006.102**
 EAN: 8714345151779

HiSpeed Segmented Bits 1 1/4"

Superior Quality HiSpeed Diamond Segmented Bits. For Wet Use in High Strength & Heavily Reinforced Concrete.

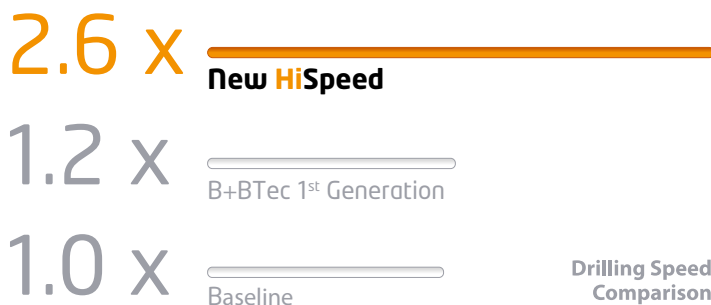
Bit Diameters Ø41 - Ø1200 mm
Diamond Height: 10 mm
Threading: 1 1/4"



Part Nr.	Diameter	Length	EAN
1.904.140	41	400	8714345172521
1.904.640	46	400	8714345165899
1.905.140	51	400	8714345152684
1.905.640	56	400	8714345152691
1.906.140	61	400	8714345152707
1.906.640	66	400	8714345152714
1.907.140	71	400	8714345152721
1.907.640	76	400	8714345152738
1.908.140	81	400	8714345152745
1.908.640	86	400	8714345152752
1.909.140	91	400	8714345152769
1.910.140	101	400	8714345152776
1.910.640	106	400	8714345152783
1.911.240	112	400	8714345152790
1.912.240	122	400	8714345152806
1.912.740	127	400	8714345152813
1.913.240	132	400	8714345152820
1.914.040	140	400	8714345152837
1.915.140	151	400	8714345152844
1.915.640	156	400	8714345152851
1.916.040	160	400	8714345152868
1.916.440	164	400	8714345152875
1.917.140	171	400	8714345152882
1.918.140	181	400	8714345152899
1.919.040	190	400	8714345152905
1.920.040	200	400	8714345152912
1.921.040	210	400	8714345188140
1.921.840	218	400	8714345152929
1.923.040	230	400	8714345152936
1.925.040	250	400	8714345152943
1.927.040	270	400	8714345152950
1.928.040	280	400	8714345152967
1.930.040	300	400	8714345152974
1.932.040	320	400	8714345152981
1.935.040	350	400	8714345152998

Unparalleled Drilling Speed

The introduction of the new HiSpeed crown and segmented diamond bits marks our biggest advance in drilling performance, with drilling speeds more than doubling and often even tripling when compared to the first generation bits.



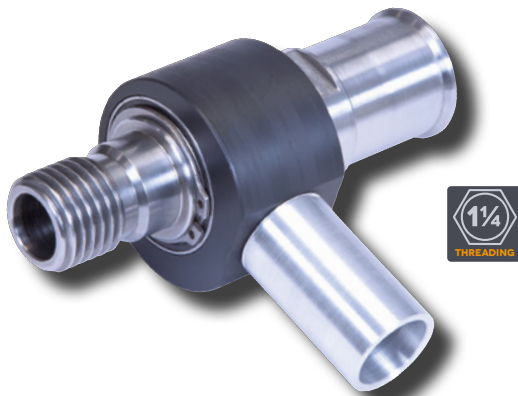
+ DRY DRILLING IN MASONRY up to 250 mm



DrySpeed Segmented Bits 1 1/4"

DrySpeed Diamond Segmented Bits. For Dry Use in Brick, Masonry, Calcium Silicate, etc.

Diamond Height: 9 mm
Threading: 1 1/4"



Dry Drilling Adapter

Transforms the Karat® 350 into a dry drilling unit.
Allows for continued alternating wet/dry use.
Threading: 1 1/4"

Dry Drilling Adapter

Part Nr.: **6.000.504**
EAN: 8714345212586

Part Nr.	Diameter	Length	EAN
1.503.733	37	330	8714345159966
1.504.233	42	330	8714345159973
1.505.233	52	330	8714345159980
1.505.633	56	330	8714345159997
1.506.809	68	90	8714345160009
1.507.233	72	330	8714345160016
1.507.633	76	330	8714345160023
1.508.209	82	90	8714345160030
1.508.733	87	330	8714345160047
1.509.233	92	330	8714345160054
1.510.233	102	330	8714345160061
1.510.733	107	330	8714345160078
1.511.233	112	330	8714345160085
1.512.233	122	330	8714345160092
1.512.733	127	330	8714345160108
1.513.233	132	330	8714345160115
1.514.233	142	330	8714345160122
1.515.233	152	330	8714345160139
1.516.433	164	330	8714345160146
1.520.220	202	200	8714345160153
1.525.020	250	200	8714345160160



180



Water Collector Ring Small

- For a clean work area and overhead drilling.
- Requires WCR Mousing Brackets for Installation
- **Max. Bit Diameter: Ø131 mm**
- Replacement covers available (Part Nr. 6.506.030)

Water Collector Ring Small

Part Nr.: **2.000.234**

EAN: 8714345216492

180

350



Water Collector Ring Medium

- For a clean work area and overhead drilling.
- Requires WCR Mousing Brackets for Installation
- **Max. Bit Diameter: Ø181 mm**
- Replacement covers available (Part Nr. 6.506.033)

Water Collector Ring Medium

Part Nr.: **2.000.235**

EAN: 8714345216508

350



Water Collector Ring Large ^{NEW!}

- For a clean work area and overhead drilling.
- Requires WCR Mousing Brackets for Installation
- **Max. Bit Diameter: Ø320 mm**
- Replacement covers available (Part Nr. 6.506.041)

Water Collector Ring Large

Part Nr.: **2.000.356**

EAN: 8714345244556



WCR Mounting Brackets

- Set of 2 mounting brackets for the installation of either Water Collector Ring Small, Medium or Large.

WCR Mounting Brackets

Part Nr.: **2.000.290**

EAN: 8714345220161



MORE ON [BBTECTOOLS.COM](https://www.bbteertools.com)